

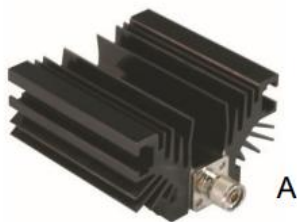
150W DC-6GHz RF Attenuator

Coaxial fixed attenuators are used in absorbing energy of transmission line, expanding power range and controlling power level, they are also used in accurately measuring power or spectrum of RF microwave transmitters accompany with small power meter, comprehensive tester or spectrum analyzer.

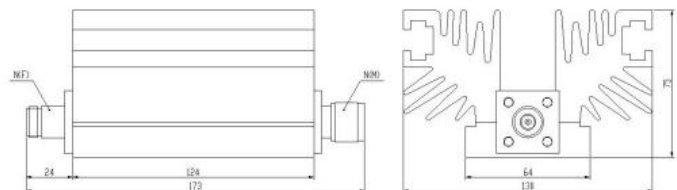
Technical Data Sheet

Frequency Range	DC~6GHz
Connectors	N,7/16
Body Material and Plating	Aluminum, Black Anodize
Power	150W
Peak Power	10KW ((5μs pulse width,1.5% duty circle)
Impedance	50Ω
Temperature Range	-55°C ~ +125°C
Dimensions	A:173×130×75mm; B:173×78×78mm
Weight	A:1.5Kg; B:1.2Kg

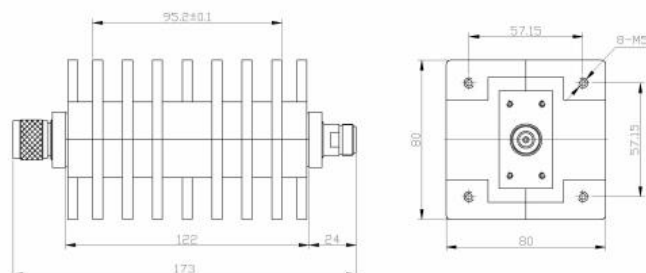
Model Number	Frequency Range(GHz)	Attenuation Value & Accuracy (dB)				Max VSWR
		20	30	40	50	
PDTS150-XX-2	DC-2	-0.5/+0.6	-0.5/+0.6	-0.6/+0.75	-0.6/+0.75	1.15
PDTS150-XX-4	DC-4	-0.5/+0.75	-0.5/+0.8	-0.6/+0.8	-0.6/+0.8	1.25
PDTS150-XX-6	DC-6	-0.5/+0.75	-0.5/+1.0	-0.6/+1.0	-0.6/+1.0	1.30



A



B



Tolerance: ±5%