

FOCUS ON THE FUTURE ——



Shenzhen Tianruitong Microwave Devices Co., Ltd

Website : www.becenrf.com

Address : 5th Floor, building E, Huazhan Logistics Park, Shajing Street
Shenzhen, Guangdong, China

Contact: Tina Email: tina@becenrf.com

Phone/ Whatsapp: +86 17727882663



Shenzhen Tianruitong Microwave Devices Co., Ltd



Shenzhen Tianruitong Microwave Devices Co., Ltd is professional on RF & Microwave components design, production, marketing and service as one of the modern high-tech enterprises.

TRT Microwave produces variety of specifications and various frequency structure of RF Attenuator, Dummy load, DC block, Power Splitter, Amplifier, Ceramics, RF Coupler, RF Accessories with well-equipped testing facilities and strong technical force. We have had experiences in OEM and ODM for years, with a wide range, high quality and reasonable prices.



ABOUT US

TEST EQUIPMENT



POWER AMPLIFIER

Frequency range: 130MHz ~ 220MHz, 220MHz ~ 350MHz,
350MHz ~ 600MHz, 570MHz ~ 1000MHz / 1GHz ~ 3GHz
Output power: $P_o \geq 100W$ / $P_o \geq 20W$
Power gain: $\geq 50dB$ / $\geq 43dB$
Harmonic output: $\leq -50dBc$ / $\leq -60dBc$
Stray output: $\leq -70dBc$
Input VSWR: ≤ 1.5
Supply voltage: 28V DC
Working current: $\leq 13A$ ($P_o=100W$)
Control interface Net: export, RS232, RS485 etc
Outline size: 250mm \times 90mm \times 70mm
RF interface: IN: SMA ; OUT:N-JK
Working storage temperature: $-40^\circ C \sim +65^\circ C / -45^\circ C \sim +70^\circ C$



TRT-PA100-01



TRT-PA100-02

Frequency range: 1GHz ~ 3GHz
Output power: $P_o \geq 50W$ / $P_o \geq 100W$
Power gain: $\geq 48dB$ / $\geq 50dB$
Harmonic output: $\leq -60dBc$
Stray output: $\leq -70dBc$
Input VSWR: ≤ 2.5
Supply voltage: 28V:DC
Working current: $\leq 6A$ ($P_o=20W$)
Control interface: Net:export, RS232, RS485
Outline size: 250mm \times 180mm \times 70mm
RF interface: IN:SMA ; OUT:N-JK
Working storage temperature: $-40^\circ C \sim +65^\circ C / -45^\circ C \sim +85^\circ C$

2W SMA ATTENUATOR



BC-AT02-01



BC-AT02-02



BC-AT02-03



TRT-AT02-01

Power Maximum: 2 Watt
 Connector: SMA-JK / RP SMA-JK
 Frequency: DC~6GHz
 VSWR Maximum: 1.2:1
 Impedance: 50 Ohm
 Attenuation: 1-30dB
 Attenuation Accuracy: 1-10dB±0.5dB, 15-30dB±1dB
 Temperature Range : -55°C ~ +125°C

2-5W RF ATTENUATOR



BC-AT02-04



BC-AT02-05



BC-AT02-06



TRT-AT03-01

Power Maximum: 2 / 3 / 5Watt
 Connector: N-JK / SMA-JK / BNC-JK
 Frequency: DC~3GHz / 6GHz
 VSWR Maximum: 1.2:1 / 1.25
 Impedance: 50 Ohm
 Attenuation: 1-40dB
 Attenuation Accuracy: 1-10dB±0.5dB, 15-40dB±1dB
 Temperature Range: -55°C ~ +125°C

10W ATTENUATOR



BC-AT10-01



BC-AT10-02



BC-AT10-03

Power Maximum: 10 Watt

Connector: N-JK / SMA-JK / BNC-JK

Frequency: DC~3GHz / 4GHz

VSWR Maximum: 1.2:1

Impedance: 50 Ohm

Attenuation: 1-40dB

Attenuation Accuracy: 1-10dB \pm 0.5dB, 15-40dB \pm 1dB

Temperature Range: -55°C ~ +125°C

15-30W RF ATTENUATOR



BC-AT15-01



BC-AT20-01



BC-AT25-01



BC-AT25-02

Power Maximum: 15 / 20 / 25 / 30Watt

Connector: N-JK / SMA-JK

Frequency: DC~3GHz / 4GHz

VSWR Maximum: 1.2:1

Impedance: 50 Ohm

Attenuation: 1-40dB

Attenuation Accuracy: 1-10dB \pm 0.5dB, 15-40dB \pm 1dB

Temperature Range: -55°C ~ +125°C

50W ATTENUATOR



BC-AT50-01



BC-AT50-02



BC-AT50-03

Power Maximum: 50 Watt

Connector: N-JK / DIN-J to N-K

Frequency: DC~3GHz / 4GHz

VSWR Maximum: 1.2:1

Impedance: 50 Ohm

Attenuation: 1-50dB

Attenuation Accuracy: 1-10dB \pm 0.5dB, 15-40dB \pm 1dB, 50dB \pm 1.5dB

Temperature Range: -55°C ~ +125°C

100W ATTENUATOR



BC-AT100-01



BC-AT100-02



BC-AT100-03

Power Maximum: 100 Watt

Connector: N-JK / DIN-J to N-K

Frequency: DC~3GHz / 4GHz

VSWR Maximum: 1.2:1

Impedance: 50 Ohm

Attenuation: 1-60dB

Attenuation Accuracy: 1-10dB \pm 0.5dB, 15-40dB \pm 1dB, 50dB-60dB \pm 1.5dB

Temperature Range: -55°C ~ +125°C

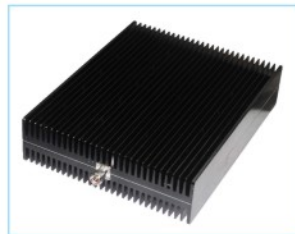
150-500W ATTENUATOR



BC-AT150-01



BC-AT200-01



BC-AT500-01

Power Maximum: 150 / 200 / 300 / 500Watt

Connector: N-JK / N-KK / DIN-JK

Frequency: DC~3GHz / 4GHz

VSWR Maximum: 1.2:1

Impedance: 50 Ohm

Attenuation: 1-60dB

Attenuation Accuracy: 3G: 1-10dB±0.5dB, 15-40dB±1dB, 50-60dB±1.5dB

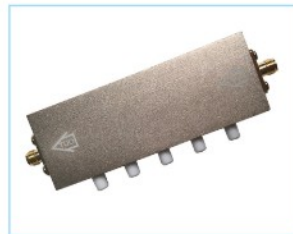
4G: 1-30dB±1dB, 40-60dB±2dB

Temperature Range: -55°C ~ +125°C

STEP VARIABLE ATTENUATOR



BC-SA05-01



BC-SA05-02



BC-SA05-05



BC-SA05-06

Power: 5 Watt

Frequency: DC~3GHz

Connector: N-KK / SMA-KK

VSWR Maximum: 1.2:1

Impedance: 50 Ohm

Attenuation: 1-30dB / 0-60dB / 0-90dB

Insertion Loss: ≤2.5dB / ≤3db / ≤3.5db

Attenuation Accuracy: 0-30dB: 1.2.4.8.16dB 1dB step, 0-10dB.±0.8dB, 10-30dB±1.3dB

0-60dB: 1.2.4.8.10.10.10.16dB 1db Step 0-10dB.±0.5dB,10-30dB±0.8dB, ≥50dB 2.5%

0-90dB: 1.2.4.6.8.16.20.20.20dB 1dB step ±3.5dB Max

Temperature Range: -55°C ~ +70°C

2W DUMMY LOAD



BC-TE02-01



BC-TE02-02



BC-TE02-03

Max Power: 2 Watt

Frequency: DC~3GHz / 6GHz

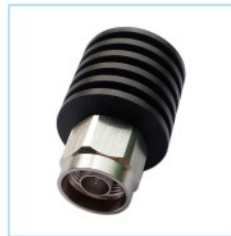
Connector: N-Male / SMA-Male / BNC-Male

Maximum VSWR: 1.2:1

Impedance: 50 Ohm

Temperature Range: -55°C ~ +125°C

5W DUMMY LOAD



BC-TE05-01



BC-TE05-02



BC-TE05-03



BC-TE05-04



BC-TE05-05



BC-TE05-06

Max Power: 5 Watt

Frequency: DC~3GHz / 6GHz

Connector: N / SMA/ BNC / DIN (7/16) / NEX10 Male

Maximum VSWR: 1.2:1 / 1.25:1

Impedance: 50 Ohm

Temperature Range: -55°C ~ +125°C

10W DUMMY LOAD



BC-TE10-01



BC-TE10-02



BC-TE10-05



BC-TE10-06

Max Power: 10 Watt

Frequency: DC~3GHz / 6GHz

Connector: N / SMA/ BNC / DIN (7/16) / NEX10 Male

Maximum VSWR: 1.2:1 / 1.25:1

Impedance: 50 Ohm

Temperature Range: -55°C ~ +125°C

25W DUMMY LOAD



BC-TE25-01



BC-TE25-02



BC-TE25-03



BC-TE25-04

Max Power: 25 Watt

Frequency: DC~3GHz / 6GHz

Connector: N-M/F / DIN (7/16) / UHF Male

Maximum VSWR: 1.2:1 / 1.25:1

Impedance: 50 Ohm

Temperature Range: -55°C ~ +125°C

50W DUMMY LOAD



BC-TE50-01



BC-TE50-02



BC-TE50-03



BC-TE50-04

Max Power: 50 Watt
 Frequency: DC~3GHz / 4GHz
 Connector: N-M/F / DIN (7/16) -M
 Maximum VSWR: 1.2:1
 Impedance: 50 Ohm
 Temperature Range: -55°C ~ +125°C

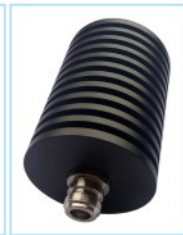
100W DUMMY LOAD



BC-TE100-01



BC-TE100-02



BC-TE100-03



BC-TE100-04



BC-TE100-05



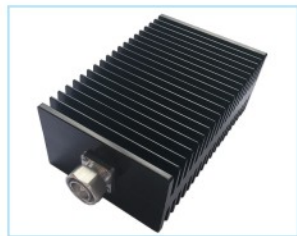
BC-TE100-06



BC-TE100-07

Max Power: 100 Watt
 Frequency: DC~3GHz / 4GHz
 Connector: N-M/F / DIN (7/16)-M / UHF-M
 Maximum VSWR: 1.2:1
 Impedance: 50 Ohm
 Temperature Range: -55°C ~ +125°C

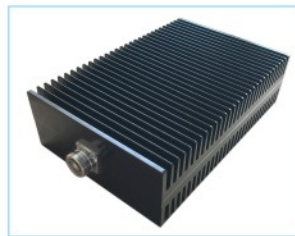
200-500W DUMMY LOAD



BC-TE200-01



BC-TE300-01



BC-TE300-02



BC-TE500-01

Max Power: 200 /300 /500 Watt
 Frequency: DC~3GHz / 4GHz
 Connector: N-M/F / DIN (7/16) - M/F
 Maximum VSWR: 1.2:1 / 1.25:1
 Impedance: 50 Ohm
 Temperature Range: -55°C ~ +125°C

DC BLOCK



BC-DB02-03



BC-DB02-01



BC-DB02-02



BC-DB02-04



BC-DB02-05



package

High Voltage DC Block

Max Power: 200W
 Frequency: DC~3GHz
 Connector: N-JK
 Max VSWR: 1.2:1
 Impedance: 50 Ohm
 Voltage: 3000V
 Min inner conductor insulation capacitor: 1
 Max inner conductor insulation capacitor: 4
 Temperature Range: -55°C ~ +125°C

Power: 2W
 Frequency: DC~6GHz
 Connector: SMA-JK / N-JK
 Max VSWR: 1.2:1
 Impedance: 50 Ohm
 Voltage: 50V
 Insertion loss: ≤ 1
 Tolerance: $\pm 2\%$ Max
 Temperature Range: -55°C ~ +125°C

POWER DIVIDER



TRT-PD02-2



TRT-PD02-3



TRT-PD50-5-N



TRT-PD50-5-S

Frequency Range: 380~2500Mhz / 1500~8000Mhz

Power Handling: 50W

Connector: SMA-KK / N-KK

VSWR: 1 : 1.3

Impedance: 50Ohm

Insert loss: $\leq 2.5\text{db}$ / $\leq 5.5\text{db}$

Temperature Range: $-20^{\circ}\text{C} \sim +115^{\circ}\text{C}$

RF CONNECTOR&ADAPTER



TRT-C01



TRT-C02



TRT-C03



TRT-C04

Type: Converter/Adapter

Impedance: 50Ω

Connector A: N / DIN / SMA Male or Female

Connector B: N / DIN / SMA Male or Female